

P9 TOUCHSCREEN DRIVER RELEASE NOTE

UPDD Touchscreen Driver

For your convenience, we've improved the functionality of the UPDD Touchscreen driver. Because of this change, the instructions found in the P9 user guide for reinstalling the touchscreen driver are incorrect. The following instructions reflect the changes for reinstalling the touchscreen driver.

Reinstalling the touchscreen driver

The touchscreen driver in the PC9/P9 is the Touchbase Universal Pointing Device Driver (UPDD). If this driver is deleted or becomes corrupted, or if you need to reinstall the driver under a new operating system (e.g., Windows 2000), you can do so by following one of the following procedures described in these instructions:

- Installing under MS-DOS
- Installing under Windows 95, 98, or NT
- Installing under Windows 2000

Follow the procedure for your operating system. If you do not have a touchscreen, you may skip this section.

Installing the touchscreen driver and utilities under MS-DOS

This section describes how to install the touchscreen driver and utilities in systems running MS-DOS. It covers the following topics:

- Installing the touchscreen driver and utilities
- Operating a mouse and touchscreen concurrently

Important To install the touchscreen software on your computer, you must have MS-DOS running.

To install the touchscreen driver and utilities in systems running MS-DOS, complete the following steps:

1. Insert the CD ROM containing the TouchBase TBDriver for the P9/PC9.
2. At the DOS prompt, type `a:install`.

3. Press **Enter** to execute this command.
4. Select **Dynapro-Serial, SC3**, then enter.
5. Press **Enter** to accept the default settings and begin the installation process.
Installation Complete will display when the process is finished.
6. Press any key to continue.
The default setting for communications is Com1 at 2400,N,8.
7. Press any key to continue.
8. Press **Esc** to quit.
9. Remove the CD ROM from the floppy drive.
10. Press **Ctrl-Alt-Del** to restart your computer.

The following files will be placed in the \TOUCH directory on your hard drive.

Directory	File
\TOUCH	TBDriver
	TBDDemo
	TBCal
	TBdiag
	TBMouse

Note When the touchscreen software is installed, the configuration parameters will be set according to your desired configuration. You should not need to change them.

If you are installing the touchscreen drivers on a system running CTC Parker's Interact software, confirm that the monitor is plugged into COM1.

11. To change the address or IRQ's from the touch directory, type the following line to get the command options.

Note When entering the following line, include a space between tbdriver and the backslash.

C:\TOUCH>tbdriver /?

Installing the touchscreen driver and utilities under Windows 95, 98, or NT

This section describes how to install the UPDD touchscreen driver and utilities in systems running Windows 95, 98, or NT 4.00.

To reinstall the touchscreen driver and utilities, complete the following steps:

1. Remove the backcover of the PowerStation to access the IRQ jumper settings.
Refer to the P9 User Guide for complete instructions on removing the backcover.
2. Check the system to ensure the IRQ is set to 7 and the I/O Port address is set to 338. These are the default settings.
3. Install the backcover onto the PC9/P9.
4. Insert the PC9 Drivers and Utilities CD into your system's CD-ROM drive.
5. On the Windows taskbar, click **Start** and then **Run**.
6. Next to the word "Open," type **[Drive]:\Setup**, and then click **OK**.

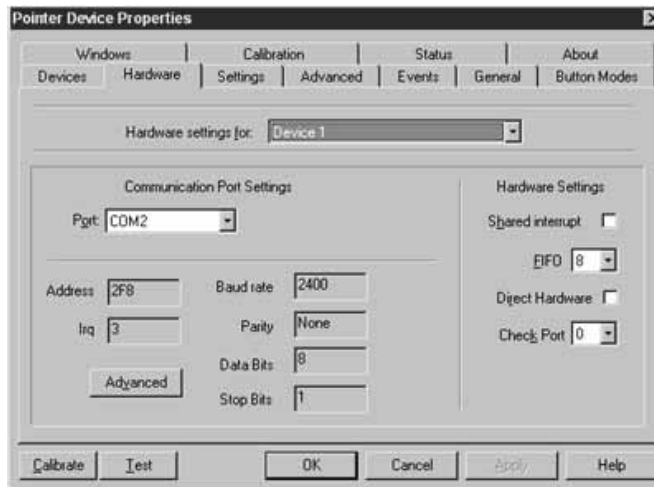
Note For **[Drive]**, type the letter of the drive where you have inserted the distribution disk or CD.

7. Follow the installation wizard to install the driver. When installation is complete, you will be prompted to restart your computer.
8. Restart the computer.

Important You must restart for your installation to take effect.

9. To verify that the system recognizes the correct IRQ and I/O Port Address settings, look at the resource settings on the Control Panel.
10. Select **Start**, then **Programs**, then **UPDD**, then **Settings**.

The Pointer Device Properties window will appear.



11. Select the **Hardware** tab.
12. Match the settings with the jumper settings that you verified in step 2.
13. If the settings match, continue with step 14. Otherwise complete the following:
 - a. Press the **Advanced** button.
 - b. Change the Address and IRQ settings to match the settings in step 2.
 - c. Press **OK**.
 - d. Press **Apply**.
14. Calibrate the touchscreen.

For complete instructions on calibrating the touchscreen, see the P9 PowerStation User Guide.

Installing the driver under Windows 2000

To install the touchscreen driver under Windows 2000, you will first identify the driver COM port, and then install the driver and configure the driver settings.

Identifying the driver COM port

How you identify the driver COM port will depend upon whether you are replacing an existing installation of the driver (e.g., a corrupted driver) or installing the driver on a computer for the first time (e.g., under a new operating system).

- If you are reinstalling the driver to replace an existing installation, determine the current driver COM port, using the Windows Device Manager.
- If you are installing the driver for the first time, install a new driver COM port, using the Add New Hardware Wizard.

To determine the present touchscreen driver COM port, complete the following steps:

1. On the Windows taskbar, select **Start** and then **Settings**.
2. On the Settings submenu select **Control Panel**.
Control Panel will appear.
3. In Control Panel, open the System directory.
The System Properties dialog box will appear.
4. In the System properties dialog box, select the **Hardware** tab.
5. On the Hardware tab, select the **Device Manager** button.
The Device Manager menu will appear.
6. On the Device Manager menu, open the **Ports** directory.
7. Double-click on a port.

Note The most likely choice is the last port in the list.

The port's Properties sheet will appear.

8. Select the **Resources** tab, and look in the Resource settings group box to determine if the port uses I/O address 338 and IRQ 7.
This will be the touchscreen driver COM port.
9. Check each port until you find the touchscreen driver COM port; then make a note of this port to use when you install the touchscreen driver.

To install a new touchscreen driver COM port, complete the following steps:

1. On the Windows taskbar, click **Start** and then **Settings**.
2. In the Settings submenu, select **Control Panel**.
Control Panel will appear.
3. In Control Panel, select **Add New Hardware**.
The Add New Hardware Wizard will appear.
4. In the Add New Hardware Wizard, select **Add a Device**, and then click **Next**.
5. In the next dialog box, select **Add a New Device**, and then click **Next**.
6. In the next dialog box, select **No, select from a list**, and then click **Next**.

7. In the next dialog box, select **Port (COM&LPT)**, and then click **Next**.
8. In the next dialog box:
 - a. Select **Standard Port Types** in the Manufacturers group box.
 - b. Select **Communication Port** in the Models group box.
9. Click **Next**.
10. When you are prompted to enter your hardware settings, click **OK**.

The Resources tab will appear.
11. In the Settings Based On list box, scroll down to **Basic Configuration 0008**.

Question marks (?) will appear next to Interrupt Request and Input/Output Address in the Resource Settings group box.
12. In the Resource Settings group box, select **Interrupt Request**, and then click the **Change Settings button**.

The Edit Interrupt Request dialog box will appear.
13. In the Value list box, select the number **7** (hex), and then click **OK**.

You will return to the Resources tab.
14. In the Resource Settings group box, select **I/O Address**, and then click the **Change Settings** button.

The Edit I/O Address dialog box will appear.
15. In the **Value** list box, select the address **338** (hex), and then click **OK**.

You will return to the Resources tab.
16. On the Resources tab, click **OK**.
17. In the next dialog box, click **Next**.
18. In the next dialog box, click **Finish**.

Windows 2000 will automatically select the next available COM port number for the touchscreen driver and will assign that port I/O address 338 and IRQ 7.
19. After your COM port is set, restart your system.

Important To install the touchscreen driver, you must know the driver COM port number. If you are not sure what this number is, complete steps 1-9 for determining the present touchscreen driver COM port.

Installing the Driver

To install the touchscreen driver under Windows 2000, complete the following steps:

Important Once UPDD is installed, you can create a UPDD “clone” file that you can copy to your Touch directory and use if you need to reinstall the driver under Windows 2000. The clone file greatly simplifies the reinstallation procedure. See the UPDD online Help for instructions on how to create and use this clone file.

1. Insert the PC9 Drivers and Utilities CD into your computer’s CD-ROM drive.
2. Run **D:\drivers\touch\UPDD\P92000\setup.exe** to install the driver.
3. Press **Finish** after the installation is complete.
4. Restart the computer.
5. Calibrate the touchscreen.

For complete instructions on calibrating the touchscreen, see the P9 PowerStation User Guide.