

USB Security Key Instructions

These instructions describe the Universal Serial Bus (USB) security key used with Interact and InteractX software.

For Interact users, the USB security key replaces the obsolete parallel port security key previously shipped with Interact development systems.

For InteractX users, the USB security key replaces the software licensing mechanism previously used with InteractX software.

The USB key allows your license to be moved freely between workstations. The USB key offers the convenience of storing the license information on a button installed within a holder that connects to any USB 1.1 compatible or greater port. Laptop users will especially enjoy the flexibility of carrying their license information from system to system.

These instructions are divided into the following sections:

- Existing InteractX Users upgrading to InteractX 2.0
- Existing InteractX 2.0 Users wishing to use the USB Security Key
- Existing Interact Users upgrading to MachineShop release 1.08
- Button Removal and Installation

Refer to the general notes listed below then proceed to the applicable section.

General Notes

- For InteractX users; only one USB key is recognized per workstation. Multiple USB keys on the same workstation are not supported.
- Once a USB key has been enabled with a license, the license can not be transferred off the key.
- USB ports located on the front of a workstation are not reliable for use with the USB key. Use the USB ports that are connected directly to the workstations motherboard usually located on the back of your workstation.
- For InteractX users, you must upgrade your software to InteractX release 2.0.
- For Interact users, you must upgrade your software to MachineShop release 1.08 and use the new USB security key utility installed with that upgrade to use the USB key.
- The USB security key button can hold both Interact and InteractX product/enabling codes and therefore may be used on workstations that have both software products installed.
- Windows NT does not provide support for USB devices.

InteractX Users

To begin using the USB security key with InteractX, perform the steps depending on the section that describes your particular circumstance.

- You have an earlier version of InteractX and are upgrading your license to the InteractX release 2.0 license.
- You are an existing InteractX release 2.0 user and wish to transfer your license to the USB security key.

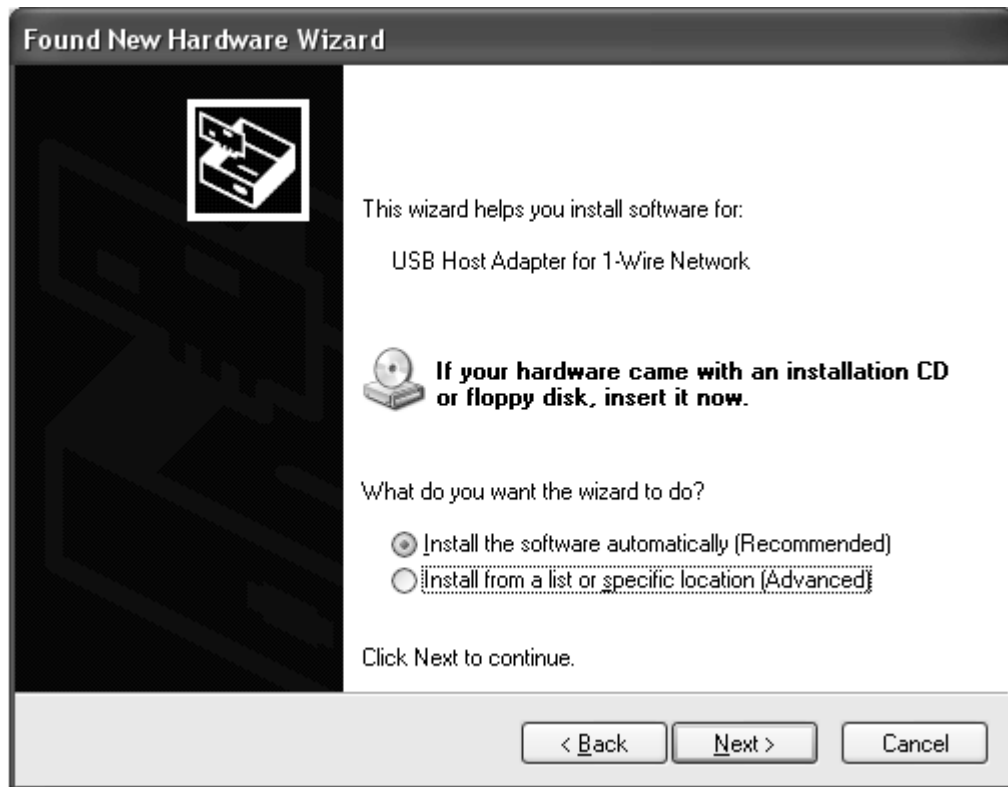
Existing InteractX users upgrading to InteractX 2.0

After upgrading to InteractX release 2.0 from any previous version of InteractX you may transfer your license to the USB security key. Do not install the USB security key on the port until instructed to do so.

1. If you have not yet installed InteractX release 2.0, you must complete that process (as described in the next few steps) before using the USB security key.
2. Insert the InteractX 2.0 installation CD.
3. Follow the instructions on the Installation Wizard.
4. At the end of the installation process, a dialog displays asking if you wish to pre-install the USB drivers at this time. Select **Yes**.

A DOS window briefly appears then you are returned to the InteractX 2.0 Installation Wizard.

5. Finish the InteractX 2.0 installation process.
6. Enter the **InteractX License Manager**, select the **Transfer License** tab.
7. Select the **Void License** option.
Your previous InteractX license is now voided.
8. Plug in the USB security key onto one of the USB ports located on the back of your workstation.
9. For Windows 2000 systems, the USB security key is auto detected.
10. For Windows XP systems, upon plugging in the USB security key, the Windows XP **Found New Hardware** dialog displays as shown below.



Leave the option set as shown in the figure above then select **Next**. Select **Finish** after the USB driver has been found and installed.

11. Obtain an InteractX release 2.0 license. When obtaining your license, you will be asked to enter your product code. The product code is displayed on the key chain connected to your USB security key.
12. Since this is a new license, the license will automatically be installed on the security key. To verify this, “Security Key License” is displayed in the header of the License Manager dialog as shown below.



Existing InteractX 2.0 Users

If you are an existing InteractX release 2.0 user and wish to transfer your license to the USB security key, follow the steps below.

1. Plug in the USB security key onto one of the USB ports located on the back of your workstation.
2. For Windows 2000 systems, the USB security key is auto detected.
3. For Windows XP systems, upon plugging in the USB security key, the Windows XP **Found New Hardware** dialog displays as shown on page 3.

Leave the option set as shown in the figure then select **Next**. Select **Finish** after the USB driver has been found and installed.

4. You must now transfer your existing InteractX 2.0 license to the USB security key. Enter the **InteractX License Manager**, select the **Transfer License** tab.
5. Select the **Save License to the Security Key** option.
6. Select **Transfer**.
7. You have now finished transferring your license to the security key. To verify this, “Security Key License” is displayed in the header of the License Manager dialog as shown on page 3.

Interact Users

To begin using the USB security key with Interact, perform the steps below.

Existing Interact users upgrading to MachineShop release 1.08

After upgrading to MachineShop release 1.08 from any previous version of MachineShop you may use the new USB security key in place of your parallel port security key. Do not install the USB security key on the port until instructed to do so. If you have already installed MachineShop release 1.08, skip to step 6.

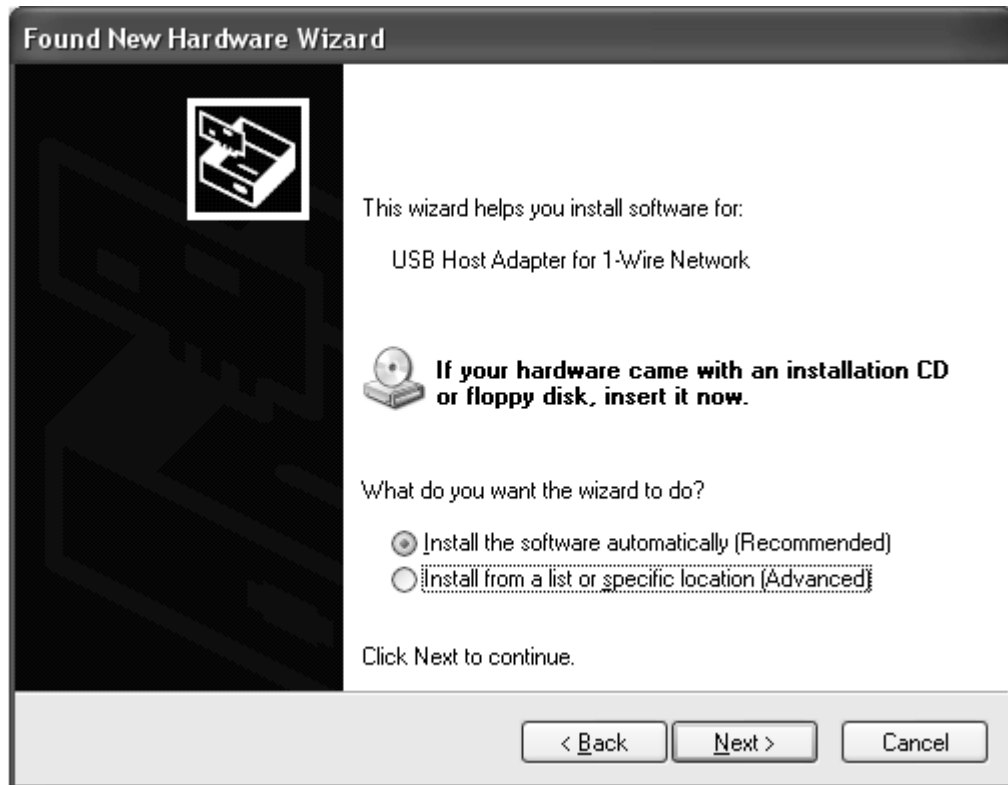
1. If you have not yet installed MachineShop release 1.08, you must complete that process (as described in the next few steps) before using the USB security key. Earlier versions do not support interfacing to the USB security key.

When upgrading to MachineShop release 1.08 it is recommended that you uninstall the previous version of MachineShop first, prior to installing MachineShop release 1.08.

2. Insert the MachineShop release 1.08 installation CD.
3. Follow the instructions on the Installation Wizard.
4. Finish the MachineShop 1.08 installation process.
5. Remove the button from the parallel port key and insert it in the USB security key by

following the steps in the next section. Return to the next step when finished.

6. Plug the USB security key into one of the USB ports located on the back of your workstation.
7. For Windows 2000 and XP systems, upon plugging in the USB security key, the Windows **Found New Hardware** dialog displays as shown below (XP version shown).

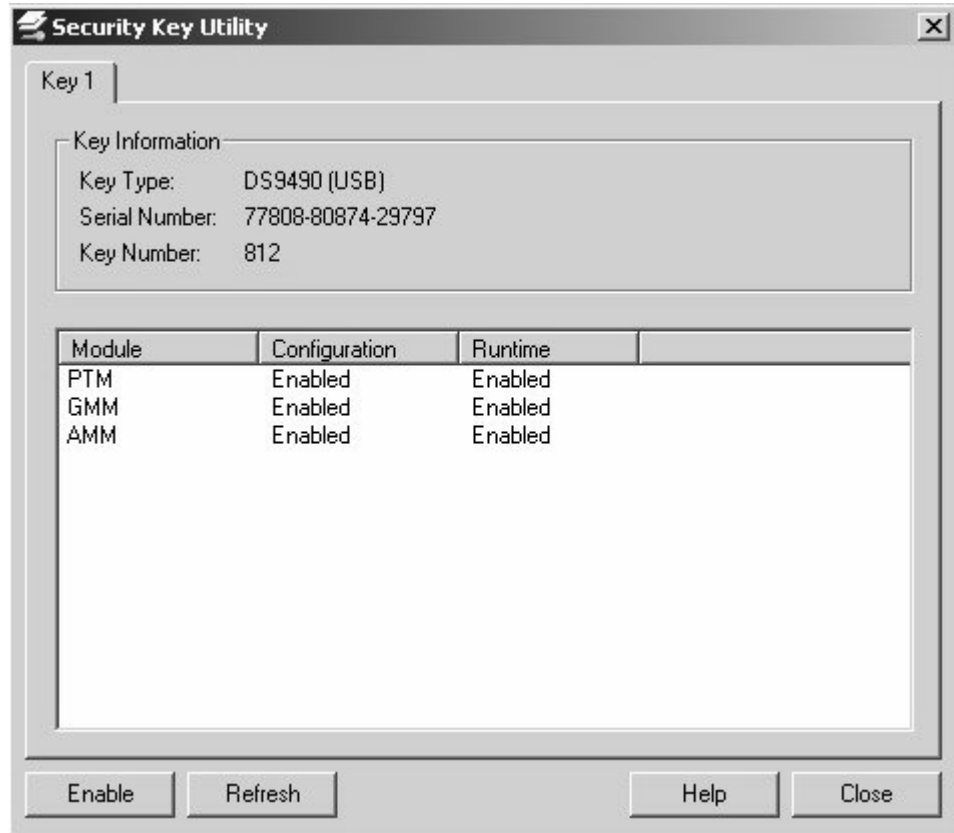


Leave the option set as shown in the figure above then select **Next**. Select **Finish** after the USB driver has been found and installed.

8. Launch the Security Key Utility (installed with the new MachineShop software) by selecting **Start -> Programs -> MachineShop -> Security Key Utility**.

The new Security Key Utility is displayed as shown below. Refer to the table for a

description of each feature.



Item	Description
Key <number> Tab	Each security key installed on your system will have a tab that contains information on the serial number, key type, and key number along with all module information. The USB key will have "USB" listed after the key type. A parallel port key will have "PARALLEL" listed after the key type. Multiple keys can be read simultaneously.

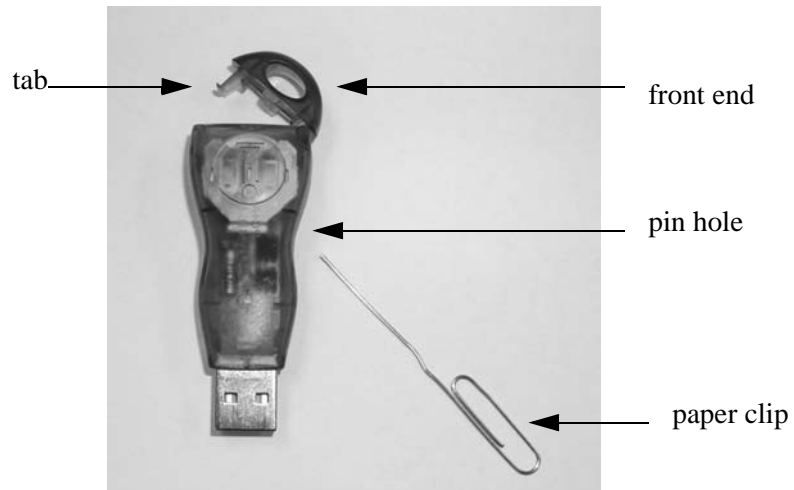
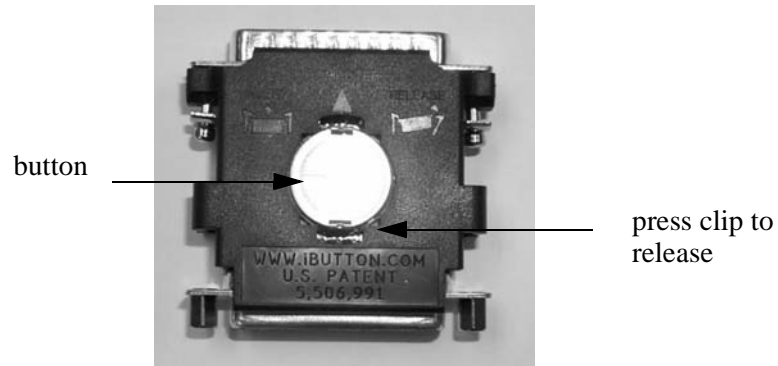
Item	Description
Columns	There are three columns displayed in the utility; Module, Configuration, and Runtime. The Module column lists each module installed on your system in it's three letter mnemonic (PTM for Panel Toolkit Module). For development modules the Configuration and Runtime column lists either "Enabled" or "Disabled" based on the status of that module on your system. An "Enabled" module is one that is authorized. For runtime modules the Runtime column lists "Enabled" or "Disabled" based on if that module has been authorized for runtime environments. An "Enabled" runtime module is one that will enter runtime mode. Runtime only modules will have a blank Configuration column.
Enable Button	Select this button to enable modules on your system. Upon purchasing a module, you will receive an enable code. In order for that module to be recognized on the system, it must be enabled. Select this button, then enter the code in the text box. Upon authentication, the module will be enabled. Module enable code information is stored with the security key.
Refresh Button	Select this button to refresh the Security Key Utility window. If subsequent keys are installed after the utility is running, you will need to press this button to display the new key(s) in the dialog.
Help Button	Select this button to display version information about the Security Key Utility.
Close Button	Select this button to close the Security Key Utility window.

9. Enabled modules will be listed. Additional keys may also appear in tabs (Key 1, Key 2, etc..). You may now use the USB security key with your workstation.

Button Removal and Installation

This section describes how to remove buttons from the parallel key and the USB key, plus instructions on installing a button within the key holder.

The Interact parallel port and USB security keys are shown in the figures below.



Removing the button from the parallel port security key

1. Position the parallel port key so that the button is facing you.
2. Press the clip on the side of the button that holds the button within the security key.
The button edge pops out of the key where you can easily remove it.

Removing the button from the USB port security key

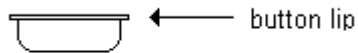
1. Position the USB security key so that the USB connector points toward your right and the "I" logo facing up.
2. Gently press on the tab, releasing the clip from the front of the security key.
3. Swing open the front end.
4. Turn the security key around so that the USB connector points toward your left and the

“T” logo facing up.

5. Insert a paper clip through the hole in the security key and push the button out the front end.

Inserting a button into the USB port security key

1. With the lip of the button facing upwards towards the “T” logo, insert the button into the security key.



2. Place the front end on the security key body and snap in place.