

RS Monitor Driver Release Note

This release note supercedes information found in Chapter 4, page 33 through page 41 of the PowerStation RS Monitor User Guide.

If you have a touchscreen monitor, you will need to install touchscreen drivers and utilities. If you do not have a touchscreen monitor, you may ignore this release note and go to the PowerStation RS Monitor User Guide section on *Adjusting the Video Image*, on page 49.

If you purchased a PowerStation RS PC with your RS Monitor, CTC Parker will install a touchscreen driver and utilities in your RS PC before it is shipped. If you need to reinstall the touchscreen drivers with an RS PC, use the MachineShop Shell installation disk.

If you are using your RS Monitor with another computer, or if your system becomes damaged, you will need to install (or re-install) the touchscreen software. Use the touchscreen driver diskettes shipped with your RS Monitor to install the touchscreen software.

This release note covers the following topics:

- *Installing the Touchscreen Driver and Utilities under MS-DOS*
- *Installing the UPDD Touchscreen Driver and Utilities under Windows 95, 98, or NT*
- *Installing the UPDD Touchscreen Driver and Utilities Under Windows 2000*

If you need additional instructions for installing or uninstalling any of the touchscreen software, see the README.TXT files on your touchscreen driver diskettes.

Important If you are using the Monitor with Interact or MachineShop Shell, do not use these disks.

Installing the Touchscreen Driver and Utilities under MS-DOS

This section describes how to install the touchscreen driver and utilities in systems running MS-DOS. It covers the following topics:

- Installing the touchscreen driver and utilities

- Operating a mouse and touchscreen concurrently

Important To install the touchscreen software in your computer, you must have MS-DOS running, and you must have a floppy disk drive connected.

Installing the Touchscreen Driver and Utilities

To install the touchscreen driver and utilities in systems running MS-DOS, complete the following steps:

1. Insert the TouchBase TBDriver for RS Monitors Diskette (#HA-73221-100) into drive A.
2. At the DOS prompt, type `a:install`.
3. Press **Enter** to execute this command.
4. Select **Dynapro-Serial, SC3**, then enter.
5. Press **Enter** to accept the default settings and begin the installation process.
6. Installation Complete will display when the process is finished. Press any key to continue.
7. The default setting for communications is Com 1 at 2400,N,8. Press any key to continue.
8. Press Esc to quit.
9. Remove the installation diskette from the floppy drive.
10. Press **Ctrl-Alt-Del** to restart your computer.

The following files will be placed in the \TOUCH directory on your hard drive.

Directory	File
\TOUCH	TBDriver
	TBDDemo
	TBCal
	TBdiag
	TBMouse

Note When the touchscreen software is installed, the configuration parameters will be set according to your desired configuration. You should not need to change them.

If you are installing the touchscreen drivers on a system running CTC Parker's Interact software, verify that the monitor is plugged into COM1.

11. To change the address or IRQ's from the touch directory, type the following line to get the command options.

Note: When entering the following line, include a space between tbdriver and the backslash.

```
C:\TOUCH>tbdriver /?
```

Installing the UPDD Touchscreen Driver and Utilities under Windows 95, 98, or NT

This section describes how to install the UPDD touchscreen driver and utilities in systems running Windows 95, 98, or NT 4.00. For information on operating a mouse and touchscreen concurrently, refer to the PowerStation RS Monitor User Guide, page 41.

The procedures for installing the UPDD touchscreen driver vary slightly depending on whether you plan to install the driver on a CTC PowerStation or a generic computer.

Installing the UPDD Touchscreen Driver and Utilities on CTC PowerStations

To install the touchscreen driver and utilities on CTC PowerStations running Windows 95, 98, or NT, complete the following steps:

1. Remove the backcover of the PowerStation to access the IRQ jumper settings.
2. Refer to "*Changing Jumper Settings*" in your PowerStation User Guide for the location of these jumpers.
3. Check the system to ensure the IRQ and I/O Port address match the default settings listed in the following table.

Driver Release Note

Note: If the settings in the table do not match your jumper settings, write down the address and the IRQ settings on your system and set aside..

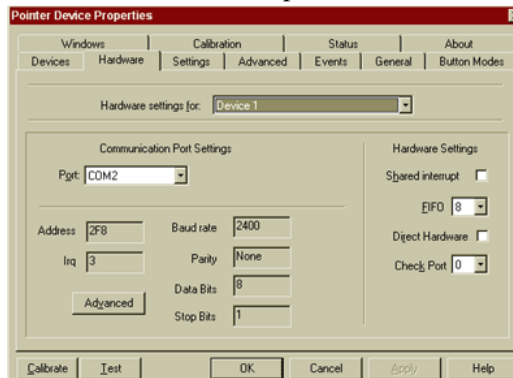
PowerStation	IRQ	I/O Port Address
P2	11	3E8
P3 - P5/PC3 - PC5	11	3E8
P9 - PC9	7	338

4. Install the backcover onto the PowerStation.
5. Insert the distribution disk containing the UPDD into your system's floppy disk drive or CD-ROM drive.
6. On the Windows taskbar, click **Start** and then **Run**.
7. Next to the word "Open," type [**Drive**]:\Setup.exe
8. Click **OK**.
Note For [**Drive**], type the letter of the drive where you have inserted the distribution disk or CD.
9. Follow the installation wizard to install the driver.
10. After installation is complete, restart the system.

To verify that the system recognizes the correct IRQ and I/O Port Address settings, complete the following:

1. Select **Start-Programs-UPDD-Settings**.

The Pointer Device Properties window will appear.



2. Select the **Hardware** tab.

3. Compare the settings with the jumper settings that you verified in step 2, and complete one of the following::

Settings	Action
If the settings match	Continue with step 4 after the table.
If the settings do not match	<ol style="list-style-type: none"> 1. Press the Advanced button. 2. Change the Address and IRQ settings to match the settings in step 2. 3. Press Okay. 4. Press Apply.

4. Calibrate the touchscreen if necessary.

For instructions, see the section on touchscreen calibration in your PowerStation RS Monitor User Guide.

Installing the UPDD Touchscreen Driver and Utilities on Generic Computers

To install the touchscreen driver and utilities on a generic computer running Windows 95, 98, or NT, complete the following steps:

1. Insert the distribution disk containing the UPDD into your system's floppy disk drive or CD-ROM drive.
2. On the Windows taskbar, click **Start** and then **Run**.
3. Next to the word "Open," type **[Drive] : \Setup**, and then click **OK**.

Note For **[Drive]**, type the letter of the drive where you have inserted the distribution disk or CD.

4. Follow the installation wizard to install the driver.
5. After installation is complete, restart the system.

6. If necessary, recalibrate the touchscreen.

For instructions, see the section on touchscreen recalibration in your PowerStation RS Monitor User Guide.

Installing the UPDD Touchscreen Driver and Utilities Under Windows 2000

To install the UPDD touchscreen driver and utilities under Windows 2000, you will first identify the driver COM port, and then install the driver.

Identifying the driver COM port

How you identify the driver COM port will depend upon whether you are replacing an existing installation of the driver (e.g., a corrupted driver) or installing the driver on a computer for the first time (e.g., under a new operating system).

- If you are reinstalling the driver to replace an existing installation, you just have to determine the present driver COM port, using the Windows Device Manager.
- If you are installing the driver for the first time, you must install a new driver COM port, using the Add New Hardware Wizard.

To determine the present touchscreen driver COM port, complete the following steps:

1. On the Windows taskbar, select **Start** and then **Settings**.
2. On the Settings submenu select **Control Panel**.
3. Control Panel will appear.
4. In Control Panel, open the **System** directory.
5. The System Properties dialog box will appear.
6. In the System properties dialog box, select the **Hardware** tab.
7. On the Hardware tab, select the **Device Manager** button.
8. The Device Manager menu will appear.
9. On the Device Manager menu, open the **Ports** directory.

10. Double-click on a port.

Note The most likely choice is the last port in the list.

The port's Properties sheet will appear.

11. Select the **Resources** tab, and look in the **Resource settings** group box to determine if the port uses I/O address **338** and IRQ **7**.

This will be the touchscreen driver COM port.

12. Check each port until you find the touchscreen driver COM port; then make a note of this port to use when you install the touchscreen driver.

To install a new touchscreen driver COM port, complete the following steps:

1. On the Windows taskbar, click **Start** and then **Settings**.
2. In the Settings submenu, select **Control Panel**.
The Control Panel will appear.
3. In the Control Panel, select **Add New Hardware**.
The Add New Hardware Wizard will appear.
4. In the Add New Hardware Wizard, select **Add a Device**, and then click **Next**.
5. Select **Add a New Device**, and then click **Next**.
6. Choose **No, select from a list**, and then click **Next**.
7. Select **Port (COM&LPT)**, and then click **Next**.
8. Select **Standard Port Types** in the Manufacturers group box.
9. Select **Communication Port** in the Models group box, and then click **Next**.
10. Click **OK** to enter your hardware settings.
The Resources tab will appear.
11. In the Settings Based On List box, scroll down to **Basic Configuration 0008**.

Question marks (?) will appear next to **Interrupt Request** and **Input/Output Address** in the Resource Settings group box.

12. In the Resource Settings group box, select **Interrupt Request**, and then click the **Change Settings** button.
The Edit Interrupt Request dialog box will appear.
 13. In the Value list box, select the number **7** (hex), and then click **OK**.
The Resources tab will display.
 14. In the Resource Settings group box, select **I/O Address**, and then click the **Change Settings** button.
The Edit I/O Address dialog box will appear.
 15. In the Value list box, select the address **338** (hex), and then click **OK**.
The Resources tab will display.
 16. On the Resources tab, click **OK**.
 17. In the next dialog box, click **Next**.
 18. In the next dialog box, click **Finish**.
Windows 2000 will automatically select the next available COM port number for the touchscreen driver and will assign that port I/O address 338 and IRQ 7.
 19. After your COM port is set, restart your system.
- Important** To install the touchscreen driver, you must know the driver COM port number. If you are not sure what this number is, complete steps 1-9 for determining the present touchscreen driver COM port, beginning on page 6.

Installing the Driver

To install the touchscreen driver under Windows 2000, complete the following steps:

1. Insert the UPDD Drivers and Utilities CD into your computer's CD-ROM drive.
2. Run **D:\drivers\touch\UPDD\RS9\setup** to install the driver.
3. Press **Finish** after the installation is complete.
4. Restart the computer.
5. **Calibrate** the touchscreen.

For instructions, see Recalibrating the Touchscreen in your user manual.

Important Once UPDD is installed, you can create a UPDD “clone” file that you can copy to your touch directory and use if you need to reinstall the driver under Windows 2000. The clone file greatly simplifies the reinstallation procedure. See the UPDD online Help for instructions on how to create and use this clone file.

