

P2 5x86 Calibration Guide

Introduction

These procedures replace the calibration procedures listed on pages 52 through 55 of the P2 user guide.

The PowerStation's touchscreen is calibrated before leaving CTC Parker. However, you may need to recalibrate the touchscreen when you begin using the PowerStation for the first time or whenever the cursor location and the location on the screen where the user touches do not match.

Note If you are using an older PowerStation, your touchscreen calibration procedure and the screens displayed may differ from those described in the following instructions.

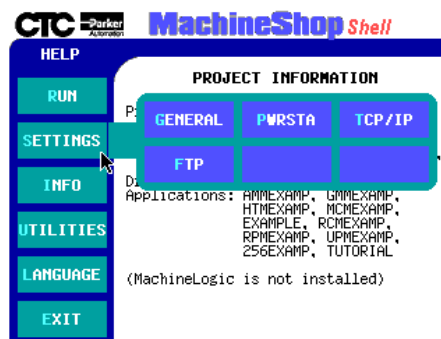
The MachineShop Shell comes with a calibration utility that you can use to calibrate the touchscreen in MS-DOS mode. The calibration utility requires a keyboard and involves calibrating the touchscreen for text and for graphics.

Recalibrating the Touchscreen

To calibrate the touchscreen, complete the following steps:

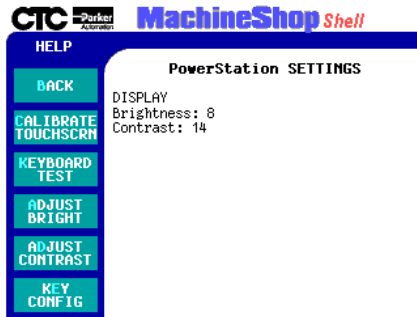
1. On the MachineShop Shell main menu, press the Settings button.

The Settings submenu will appear as shown below.



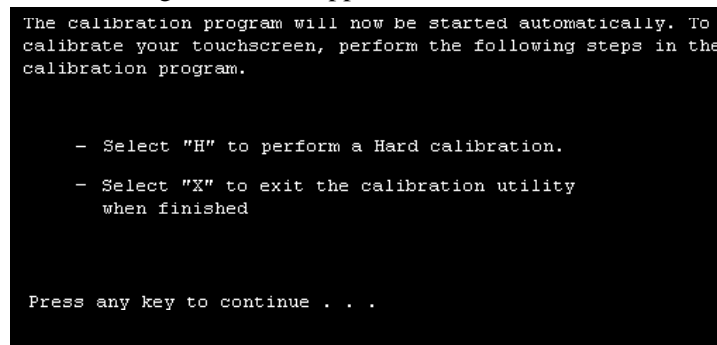
2. On the Settings submenu, press the PWRSTA button.

The PowerStation Settings menu will appear as shown below.



3. On the PowerStation Settings submenu, press the Calibrate Touchscrn button.
4. You will be prompted that a keyboard is needed to calibrate the touchscreen. Then you will be asked if you want to continue.
5. If necessary, install a keyboard on the PowerStation. See the user manual for information about connecting a keyboard to the PowerStation.
6. When you have attached a keyboard to the PowerStation, press the Yes button to continue the calibration.

The following screen will appear.



7. Press any key on the keyboard when you are ready to begin the calibration program.

The following screen will appear.

```
DynaPro Thin Film Products Inc.      (c) Touch-Base Ltd.
Touchscreen Calibration Program (EEPROM version)  Ver

----- Main Menu -----
H - Hard calibrate
T - Test menu
F - Display calib details
X - Exit

You must hard calibrate if you have not yet done so
```

8. Type H for Hard calibrate.
9. When the next screen appears, follow the instructions on the screen by touching each square as it appears until you hear a beep.
10. When you have finished, press any key.
11. Press X or Esc to exit the calibration utility.

Important After calibrating the touchscreen, enter Interact in Program Mode. Verify that the cursor appears on the screen where you touch. If it does not, recalibrate the touchscreen. The calibration must be accurate to avoid activating a button unintentionally during Run Mode.

