

MotionPanel *QuickStart Guide*

Get Started . . .

MotionPanel™ has been factory-configured to communicate by Ethernet with any Compumotor 6K/GV6K/GT6K controller (6K2, 6K4, 6K6, 6K8, GV6K, and GT6K). This means that in four easy steps, you can connect MotionPanel and a 6K/GV6K/GT6K controller and run the MotionPanel Interact application.

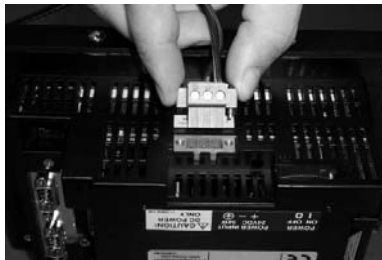
This *QuickStart Guide* tells you how to connect MotionPanel and a 6K/GV6K/GT6K controller via Ethernet cable and how to enable the controller's Ethernet port.

You must have the following software installed:

- 6K/GV6K/GT6K controller operating system. We recommend v. 6.2.6 or higher (in the controller).
- Motion Planner. We recommend v. 4.2 or higher (in your development PC).

. . . In Four Easy Steps

1 Connect power (24 VDC) to the MotionPanel and the controller.

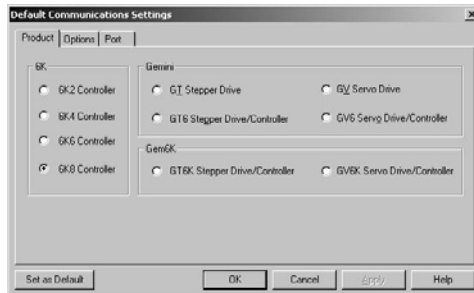


2 Connect the Ethernet cable to the MotionPanel and the controller.



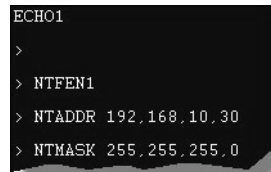
3 Enable the controller's Ethernet port.

- a. Using a serial cable, connect your development PC to the COM2 port on the 6K controller.
- b. Launch Motion Planner on the development PC.
The Default Communications Settings dialog box will appear.
- c. On the **Product** tab, select the 6K controller that you will use.



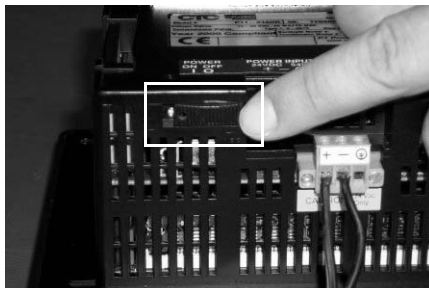
- d. Select the Port tab to specify a port setting.
- e. Click **OK** to save your settings.
The Motion Planner window will appear.
- f. Select the **Terminal1** tab, and type the following commands. Press **Enter** after each command.

```
NTFEN1
NTADDR 192,168,10,30
NTMASK 255,255,255,0
```

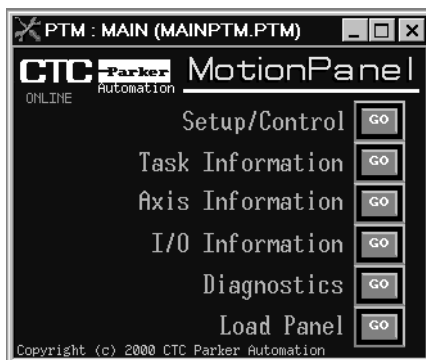


g. Type **Reset** at the bottom of the screen, and then press **Enter**.

4 Turn on the MotionPanel.



The MotionPanel Main Menu will appear.



You are now ready to run the MotionPanel Interact application.

Note For instructions on how to mount MotionPanel in an enclosure, see the *PowerStation Model P1 User Guide* on the MachineShop for MotionPanel Installation CD.

Additional Applications

You can download two additional MotionPanel applications from CTC Parker's web site:

- 640 x 480 Application
- Input Tools Application

Just go to CTC's Home page at www.ctcusa.com, and select the Motion-Panel page.