

Application Note

Associated Project: None

Related Documents: None

KEYWORDS: CTC SUPPORT FORUM

WEB BASED INFORMATION

IMMEDIATE WEB SOLUTIONS

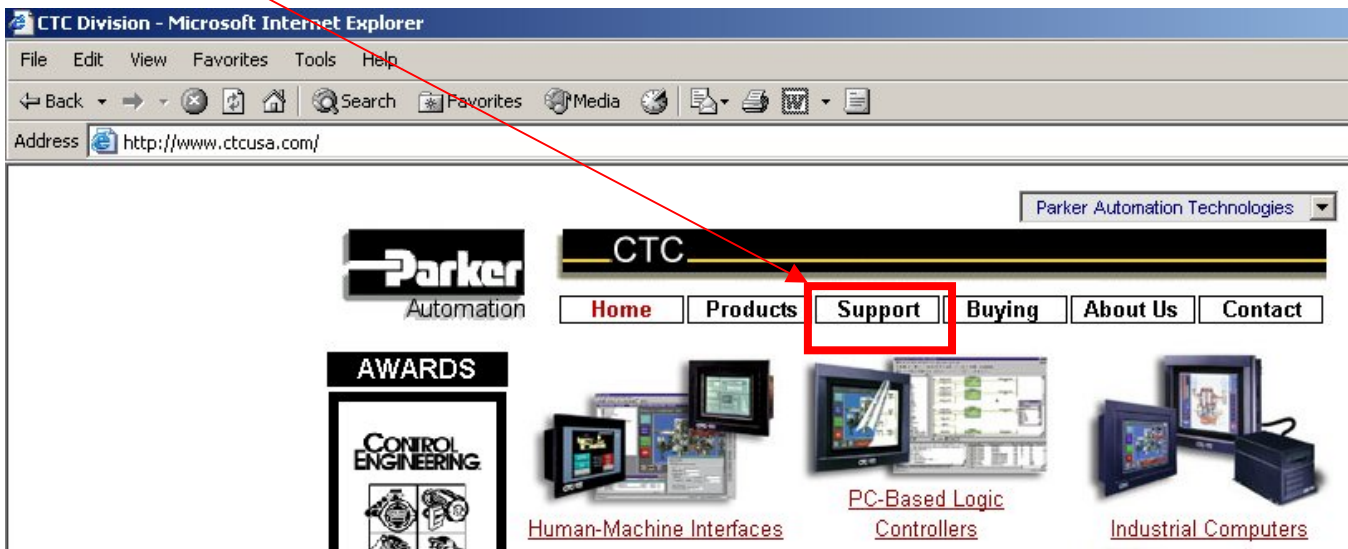
While precautions have been taken in the preparation of this note, CTC and the author assume no responsibility for errors or omissions. Neither is any liability assumed for damages resulting from the use of the information contained herein.

This document describes how to:

1. Get to the CTC Support Forum.
2. Register for the CTC Support Forum.
3. Log into the CTC Support Forum.
4. Navigate through the CTC Support Forum.
5. Post Topics into the CTC Support Forum.
6. Subscribe\Unsubscribe to a Topic or Category

1. Getting to the CTC Support Forum

To get to the CTC Support Forum open your web browser and go to [HTTP://www.ctcusa.com](http://www.ctcusa.com) and click on the Support Tab.

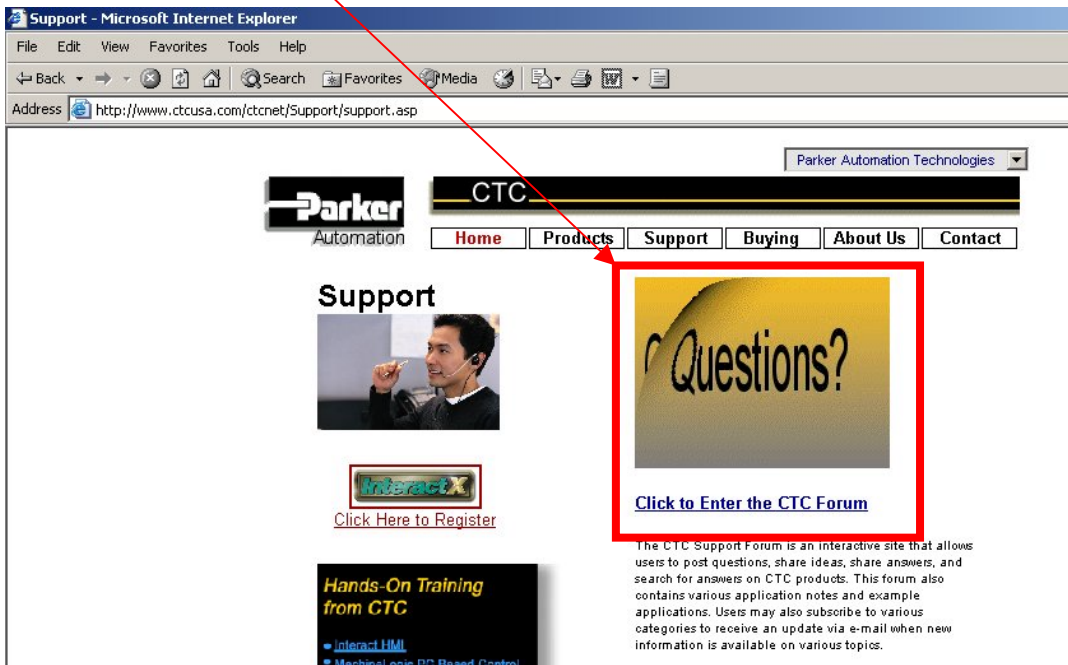


File:

Date: July 8, 2004

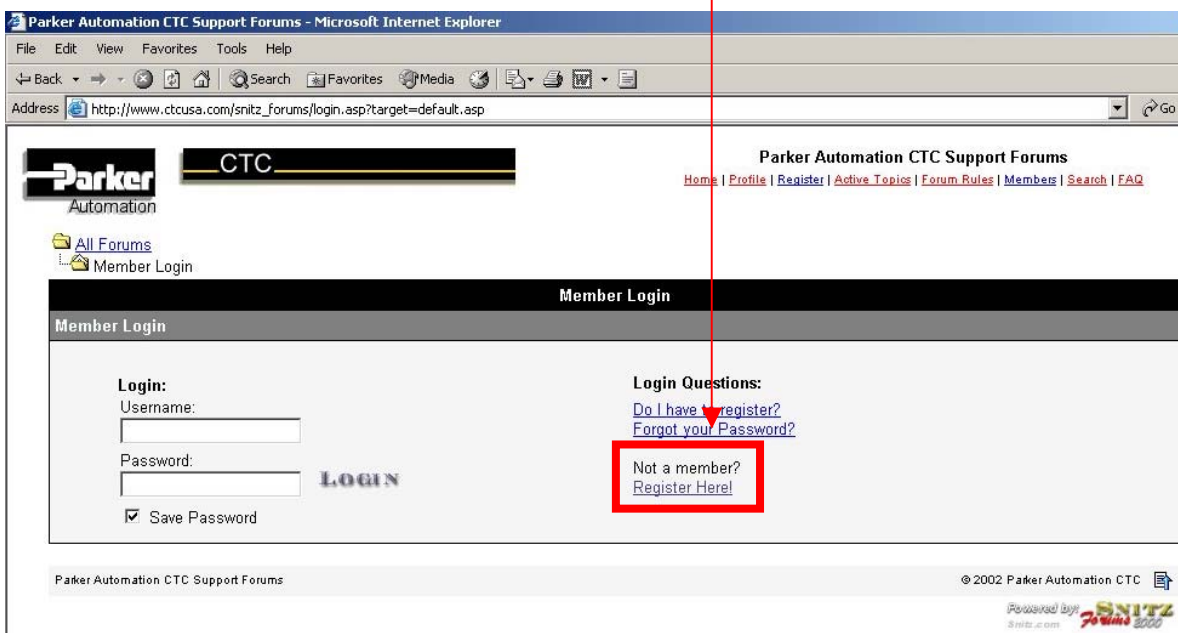
Page: 1

Once you are on the CTC Parker Automation Support Website you will see a moving icon with a link below it that says, “Click to Enter the CTC Forum.” Click on this link to go to the Forum main page.



2. Registering for the CTC Support Forum (If you have already registered please proceed to topic 3)

If you need to register click on the link that says, “Register Here!”



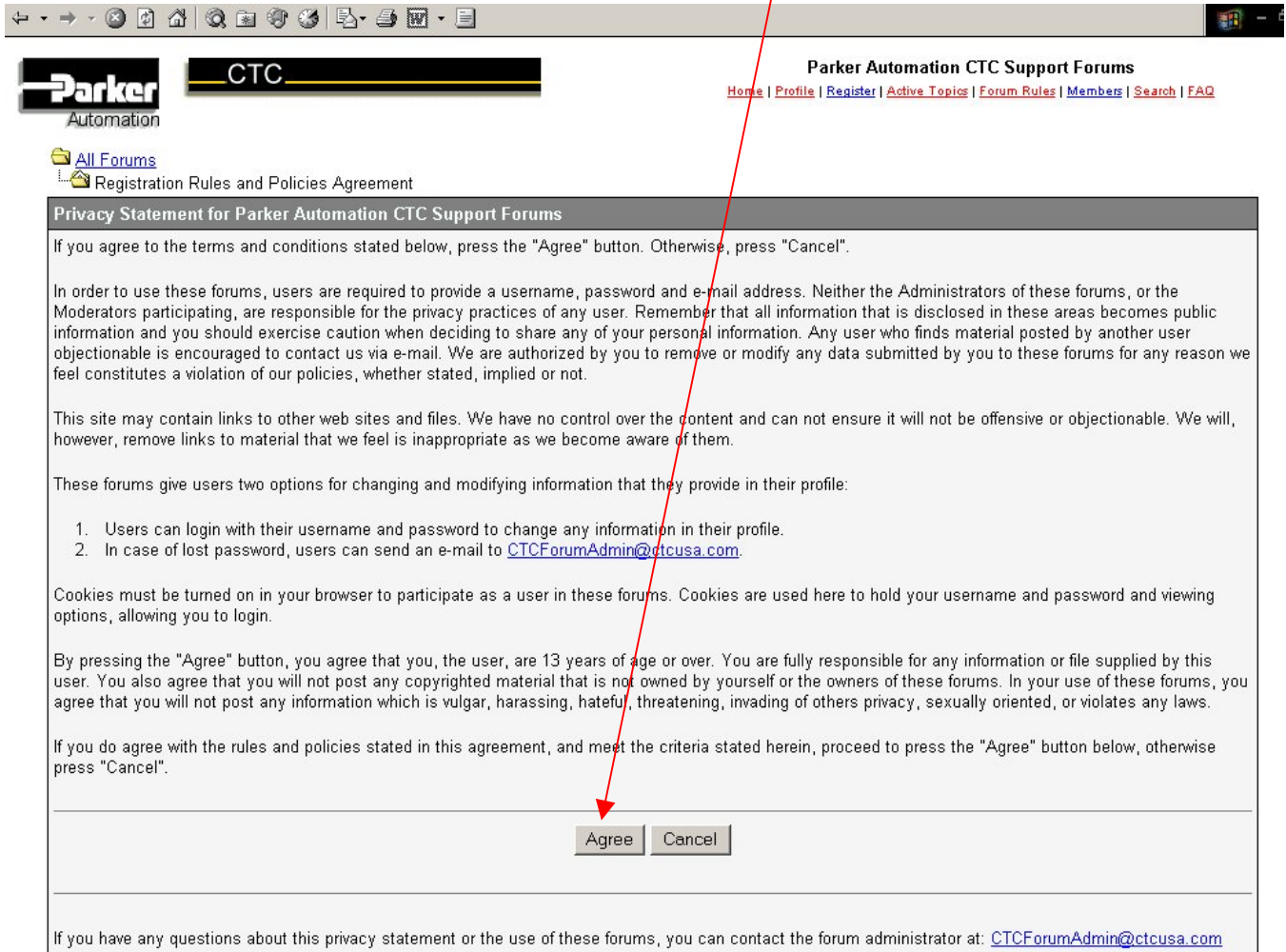
File:

Date: July 8, 2004

Page: 2

Note: If you experience a problem with this page reappearing when you are pressing the Agree button it is related to the security settings in your browser not allowing cookies, or you may have Norton's Internet Security or a similar firewall package that needs to be configured to allow you to accept cookies.

You will then be taken to a Privacy Statement. Click on the *Agree* button to continue onto the registration page.



The screenshot shows a web browser window with the following content:

- Browser address bar: [Home](#) | [Profile](#) | [Register](#) | [Active Topics](#) | [Forum Rules](#) | [Members](#) | [Search](#) | [FAQ](#)
- Page Title: Parker Automation CTC Support Forums
- Navigation: [All Forums](#), [Registration Rules and Policies Agreement](#)
- Section Header: **Privacy Statement for Parker Automation CTC Support Forums**
- Text: "If you agree to the terms and conditions stated below, press the 'Agree' button. Otherwise, press 'Cancel'."
- Text: "In order to use these forums, users are required to provide a username, password and e-mail address. Neither the Administrators of these forums, or the Moderators participating, are responsible for the privacy practices of any user. Remember that all information that is disclosed in these areas becomes public information and you should exercise caution when deciding to share any of your personal information. Any user who finds material posted by another user objectionable is encouraged to contact us via e-mail. We are authorized by you to remove or modify any data submitted by you to these forums for any reason we feel constitutes a violation of our policies, whether stated, implied or not."
- Text: "This site may contain links to other web sites and files. We have no control over the content and can not ensure it will not be offensive or objectionable. We will, however, remove links to material that we feel is inappropriate as we become aware of them."
- Text: "These forums give users two options for changing and modifying information that they provide in their profile:"
- List-Group:
 1. Users can login with their username and password to change any information in their profile.
 2. In case of lost password, users can send an e-mail to CTCFForumAdmin@ctcusa.com.
- Text: "Cookies must be turned on in your browser to participate as a user in these forums. Cookies are used here to hold your username and password and viewing options, allowing you to login."
- Text: "By pressing the 'Agree' button, you agree that you, the user, are 13 years of age or over. You are fully responsible for any information or file supplied by this user. You also agree that you will not post any copyrighted material that is not owned by yourself or the owners of these forums. In your use of these forums, you agree that you will not post any information which is vulgar, harassing, hateful, threatening, invading of others privacy, sexually oriented, or violates any laws."
- Text: "If you do agree with the rules and policies stated in this agreement, and meet the criteria stated herein, proceed to press the 'Agree' button below, otherwise press 'Cancel'."
- Buttons:
- Text: "If you have any questions about this privacy statement or the use of these forums, you can contact the forum administrator at: CTCFForumAdmin@ctcusa.com"

You only need to fill in the fields marked with a red * (all other fields are optional and are up to the users discretion) and then click on the **Submit** button.

Parker Automation CTC Support Forums
Home | Profile | Register | Active Topics | Forum Rules | Members | Search | FAQ

All Forums
Registration Rules and Policies Agreement
Registration Form for Parker Automation CTC Support Forums

All Fields marked with * are required
To complete your registration, you need to have a valid e-mail address.

Contact Info	Basics
* E-mail Address: support@ctcusa.com	* User Name: CTC_Techy
E-mail Address Again: support@ctcusa.com	* Password: [REDACTED]
Allow Forum Members to Send you E-Mail?: Yes	* Password Again: [REDACTED]
AIM: [REDACTED]	Firstname: [REDACTED]
ICQ: [REDACTED]	Surname: [REDACTED]
MSN: [REDACTED]	City: [REDACTED]
YAHOO IM: [REDACTED]	State: [REDACTED]
Links	
Homepage: http:// [REDACTED]	Country: [REDACTED]
Cool Links: http:// [REDACTED]	Occupation: [REDACTED]
http:// [REDACTED]	Signature: [REDACTED]
Picture	
Picture URL: http:// [REDACTED]	Preview [REDACTED]
Company Information	
Company: [REDACTED]	View Signatures in Posts?: Yes
	Signature checkbox checked by default?: Yes

[Back To Forum](#)

You will then be e-mailed a link back to the address that you entered in the e-mail address field that must be clicked on to activate your account.

Address: http://www.ctcusa.com/snitz_forums/register.asp?mode=DoIt

Parker Automation CTC Support Forums
Home | Profile | Register | Active Topics | Forum Rules | Members | Search | FAQ

All Forums
Registration Rules and Policies Agreement
Registration Form for Parker Automation CTC Support Forums

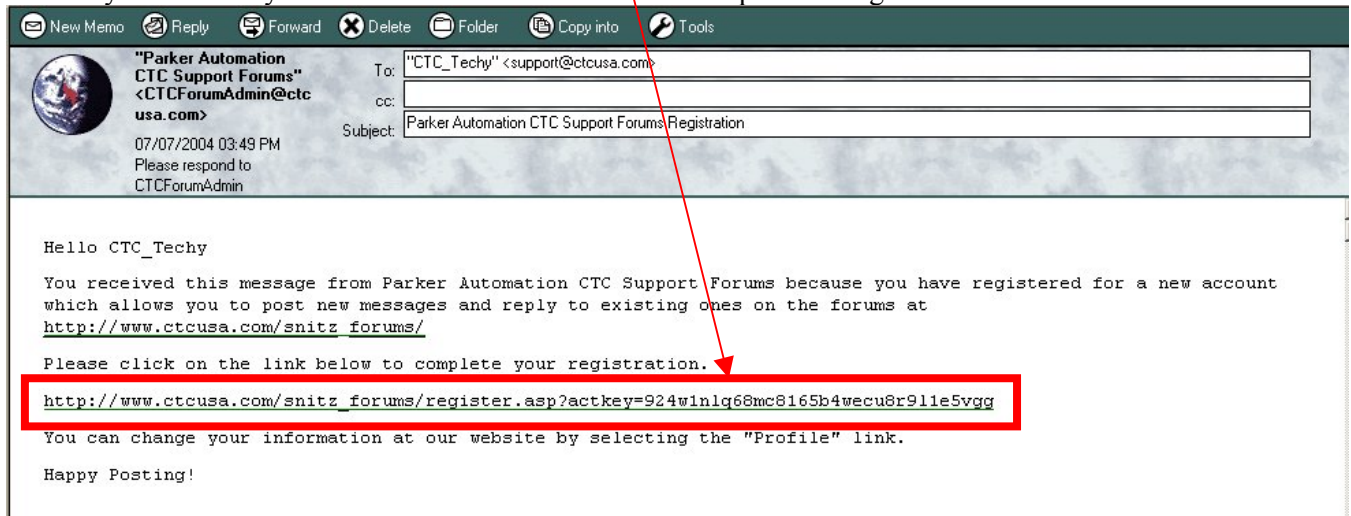
Your Registration Is Almost Complete!

Please follow the instructions in the e-mail that has been sent to **support@ctcusa.com** to complete your registration.

[Back To Forum](#)

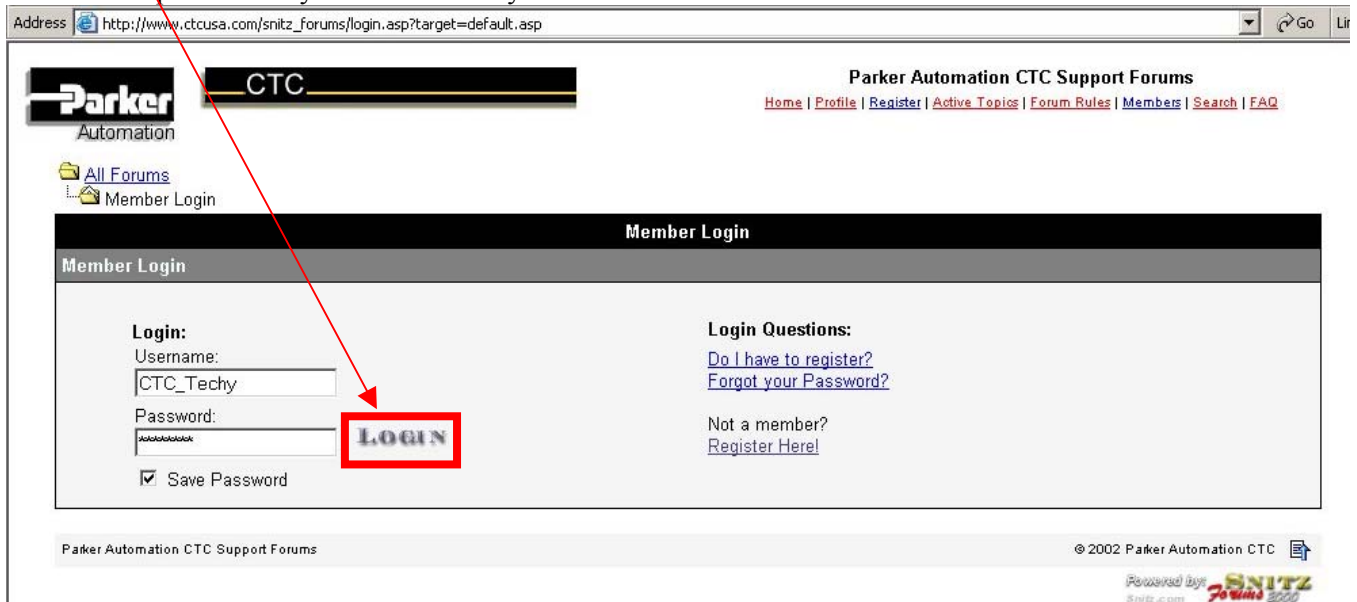
Parker Automation CTC Support Forums © 2002 Parker Automation CTC
Powered by SNITZ
Snitz.com Forums 2000

The e-mail will be from CTCFForumAdmin@ctcusa.com and will look similar to the example below. To activate your account you will need to click on the link to complete the registration.



3. Logging into the CTC Support Forum

To log on to the forum type in the user name and password you used when registering. Then click the **LOGIN** icon. A message will appear telling you that you were successfully logged in. You may also check the save password if you desire for easy access in the future.



4. Navigating around the Forum

You can navigate around the forum by expanding the categories and then the topics under each category. You can also use the **Search** Feature of the forum to look for specific keywords.

Parker Automation CTC Support Forums
[Home](#) | [Profile](#) | [Register](#) | [Active Topics](#) | [Forum Rules](#) | [Members](#) | [Search](#) | [FAQ](#)

You are logged on as CTC_Techy **LOGOUT**

Change Category Group
 Default Categories

Default Categories	Topics	Posts	Last Post	Moderator(s)
- Before You Post or Call				
Use Change Category For Viewing Options You can use the "Change Category Group" selection box above this message to see all categories at once or select a Grouping that contains information that is of interest.	0	0	11/07/2002 14:00:40	forumadmin
How to SEARCH and other Forum FAQs Please try "Search" at the top right of the page to see if the information you need is all ready posted. For questions about using this "Forum", click on FAQ at the top right of the page.	0	0	04/14/2003 15:26:33	forumadmin
What We Need to Know to Help Check here to see what information we need to be able to quickly and accurately answer your questions.	3	3	11/07/2002 14:06:36 by: forumadmin →	edaniels, forumadmin
How Subscribing Helps You Stay Current Description of different subscription options.	4	4	11/07/2002 14:25:40 by: forumadmin →	forumadmin
Don't have the PDF Viewer? Download it Here ---> http://www.adobe.com/products/acrobat/readstep2.html	0	0	05/12/2003 08:39:28	forumadmin
+ General Topics				
+ InteractX				
+ MachineLogic				
+ Interact				
+ PowersStation Hardware				
+ Windows NT/2000/XP				
+ Windows 9x				
+ DOS				
Statistics				

After clicking on the Search button the following screen will appear and allow you to search for Keywords, Specific Forums, Specific Messages, Specific Dates, or Search for a specific Member who posted it.

Parker Automation CTC Support Forums
[Home](#) | [Profile](#) | [Register](#) | [Active Topics](#) | [Forum Rules](#) | [All Subscriptions](#) | [My Subscriptions](#) | [Members](#) | [Search](#) | [FAQ](#)

You are logged on as forumadmin **LOGOUT**
[Admin Options](#)

[All Forums](#)
[Search Form](#)

Search For:

Match exact phrase
 Search for all Words
 Match any of the words

Search Forum: All Forums

Search In: Entire Message

Search By Date: Any Date

Search By Member: All Members

Parker Automation CTC Support Forums © 2002 Parker Automation CTC
 Powered by **SMITZ** SMITZ.COM

5. Posting a topic to the Forum

Note: Before posting a topic to the forum PLEASE USE THE SEARCH FEATURE TO MAKE SURE THE TOPIC DOES NOT ALREADY EXSIST.

You can post to any topic that is **NOT LOCKED**. Locked Topics are Read Only.

Parker Automation CTC Support Forums
[Home](#) | [Profile](#) | [Register](#) | [Active Topics](#) | [Forum Rules](#) | [Members](#) | [Search](#) | [FAQ](#)
 You are logged on as CTC_Techy **LOGOUT**

Change Category Group
 Default Categories [Group Category Menu](#)

Default Categories	Topics	Posts	Last Post	Moderator(s)
+ Before You Post or Call				
+ General Topics				
- InteractX				
Application Notes and Examples This is the area we will post all Application Notes and Example files.	43	43	05/11/2004 08:59:07 by: forumadmin →	forumadmin
Application Questions Please post questions regarding InteractX here.	34	56	07/06/2004 09:46:42 by: rhattstarr →	edaniels , forumadmin , hthrem
Documentation This section contains information on the InteractX product.	7	7	01/16/2004 10:46:29 by: forumadmin →	edaniels , forumadmin
Known Issues This area contains information pertaining to known issues. This area will be updated with the status and or resolution to known issues as they become available.	8	8	06/24/2004 08:38:09 by: forumadmin →	forumadmin , knowissues
Share Applications / Screens / Ideas with Members If you would like to share an Application, Screen or Idea with other members of the forum, please post them here.	1	1	07/02/2003 14:41:04 by: Jhutton →	forumadmin
Driver Releases This Forum contains links to downloadable driver files. Please be sure to read the message associated with each driver for software / hardware compatibility before downloading.	1	1	11/05/2002 15:09:06 by: forumadmin →	forumadmin
Troubleshooting Tips This forum contains links to downloadable files and information on the trouble shooting of InteractX. Please be sure to read the message associated with each tip for compatibility issues.	0	0	11/07/2002 13:43:00	forumadmin
Version Updates This forum contains links to downloadable files and information on the latest releases of InteractX Development software. Please be sure to read the message associated with each release for compatibility issues before downloading.	6	6	03/15/2004 11:48:02 by: forumadmin →	forumadmin

All posts are moderated to insure that no offensive content is posted!

In this example Application Questions was clicked on from above and then the following screen appears. To post a New Topic in InteractX Application Questions you would click on the “**New Topic**” folder.

Parker Automation CTC Support Forums
[Home](#) | [Profile](#) | [Register](#) | [Active Topics](#) | [Forum Rules](#) | [Members](#) | [Search](#) | [FAQ](#)
 You are logged on as CTC_Techy **LOGOUT**

[All Forums](#)
[InteractX](#)
[Application Questions](#)

[New Topic](#)
[Subscribe to this forum](#)

Show all topics

Page: of 3

Topic	Author	Replies	Read	Last Post
Changing the address of a tag in VBA	rhattstarr	0	12	07/06/2004 09:46:42 by: rhattstarr →
Changing the display tag for a Numeric Entry	rhattstarr	0	10	07/06/2004 09:45:45 by: rhattstarr →

File:
 Date: July 8, 2004
 Page: 7

After clicking on New Topic the following screen will appear. Type in a short description in the Subject line that describes what the topic addresses. Then in the message field type in a more detailed description about your topic, any description about attachments, and also keywords for other users to find your post via the search field. You can add attachments to your post by clicking on the Browse button and then browsing to the folder that contains the item that you wish to attach. Once you have finished it is advisable to do a Preview to make sure that every thing looks correct. Once you are sure, you can click on Post New Topic to submit it to the Forum Administrator for final review. Once your topic has been reviewed it will be made viewable to the general public. Our goal is to post it to the forum within one week of being submitted for review.



- [All Forums](#)
- [InteractX](#)
- [Application Questions](#)

Screensize:	800 x 600
Format Mode:	Basic
Format:	
	Font: <input type="text"/> Size: <input type="text"/> Color: <input type="text"/>
Subject:	Type a Short Description of the Topic Here (Short Description... 50 Char Max) Select one of the links below to see what info should be included in your post. The file can be downloaded, filled in and included as an attachment if you prefer. Hardware Need to Know. Software Need to Know. OS Need to Know.
Message:	Type a more detailed description on the Topic here. Include Keywords for users to search by. Using the Browse Button below, you may include an attachment. If you have several items to attach, you must zip them up in a zip file and then post the zip file. * HTML is OFF * Forum Code is ON Smilies
Attachment:	<input type="text"/> <input type="button" value="Browse..."/> Click the Browse button to attach a file to this post
	<input type="checkbox"/> Check here to include your profile signature. <input type="checkbox"/> Check here to subscribe to this topic.
	<input type="button" value="Post New Topic"/> <input type="button" value="Preview"/> <input type="button" value="Reset Fields"/>

6. Subscribe\Unsubscribe to a topic or category

You can also receive e-mail when someone posts to the forum by **subscribing** to the forum.

Parker Automation CTC Support Forums
[Home](#) | [Profile](#) | [Register](#) | [Active Topics](#) | [Forum Rules](#) | [Members](#) | [Search](#) | [FAQ](#)
 You are logged on as CTC_Techy **LOGOUT**

All Forums
 InteractX
 Application Questions

[new topic](#)
[Subscribe to this forum](#)

Show all topics

Page: 1 of 3

Topic	Author	Replies	Read	Last Post
 Changing the address of a tag in VBA	rhetstarr	0	12	07/06/2004 09:46:42 by: rhetstarr →
 Changing the display tag for a Numeric Entry	rhetstarr	0	10	07/06/2004 09:45:45 by: rhetstarr →



If the folder appears to be purple in color it means new content has been added to this topic or category.

By clicking on this Icon it will subscribe you to receive e-mail on this topic or category every time that it is updated.



By clicking on this Icon it will unsubscribe you from receiving e-mail on this topic or category every time that it is updated.

